

Cambodia & Overland Trips

Prepared by First Travel Cambodia

Company profile

- The three shareholders of the company are of Thai nationality and the chief Executive officer and major shareholder of the company is Mrs. Tui Pakarat-Rutten, also holds Dutch nationality. All three shareholders have long experience of working in Cambodia and Mrs. Tui Pakarat-Rutten has been a resident in the kingdom for the past twenty years. Through her representation of Air France in Cambodia. During the 1980's she has been very closely involved in the tourist sector for all of this time.
- **First Travel** commenced operations in 1994 and was one of the first to be established in Phnom Penh, after the government had taken the first steps towards the liberalization of the former socialist economy.

Registered and Head Office

We have 4 offices in Phnom Penh & Bangkok:

➔ **PHNOM PENH Office**

➔ **SIEM REAP Office**

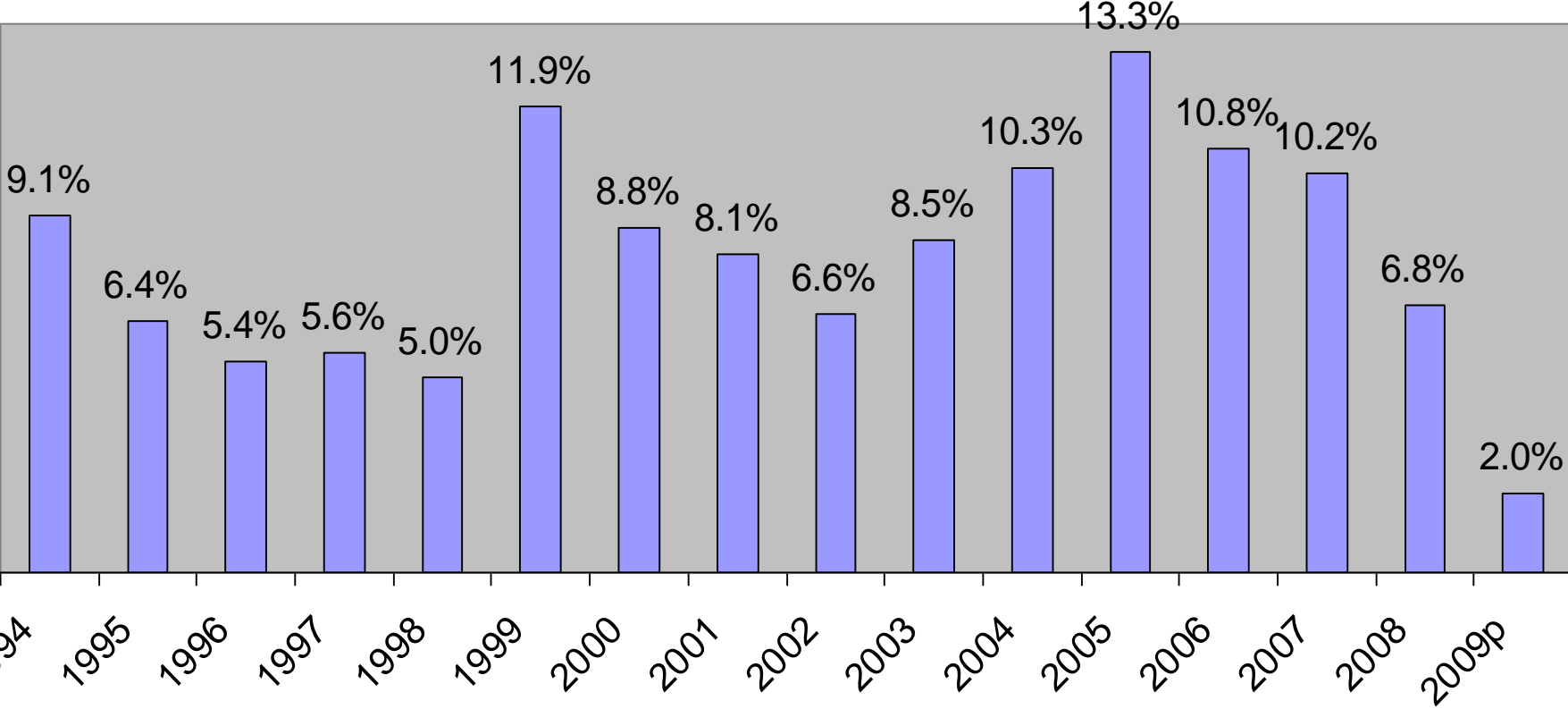
➔ **KOH KONG Office**

➔ **THAILAND office**

ECONOMY

- GDP 2009 is expected 10.8B up from 7.265B in 2006 and 8.251B in 2007
- GDP growth rate: 6.8%(2008),2%(2009)
- GDP per capita:589(2007)-625(2008)
- Inflation rate: 12.5%(2008),4%(2009)
- Trade Turnover 2008: USD 10.2B
 - Import: USD 6 B, Export: USD 4.2 B
- Depending on Agriculture, Garment, Tourism, Construction, and Services

Real GDP Growth, 1994-2009

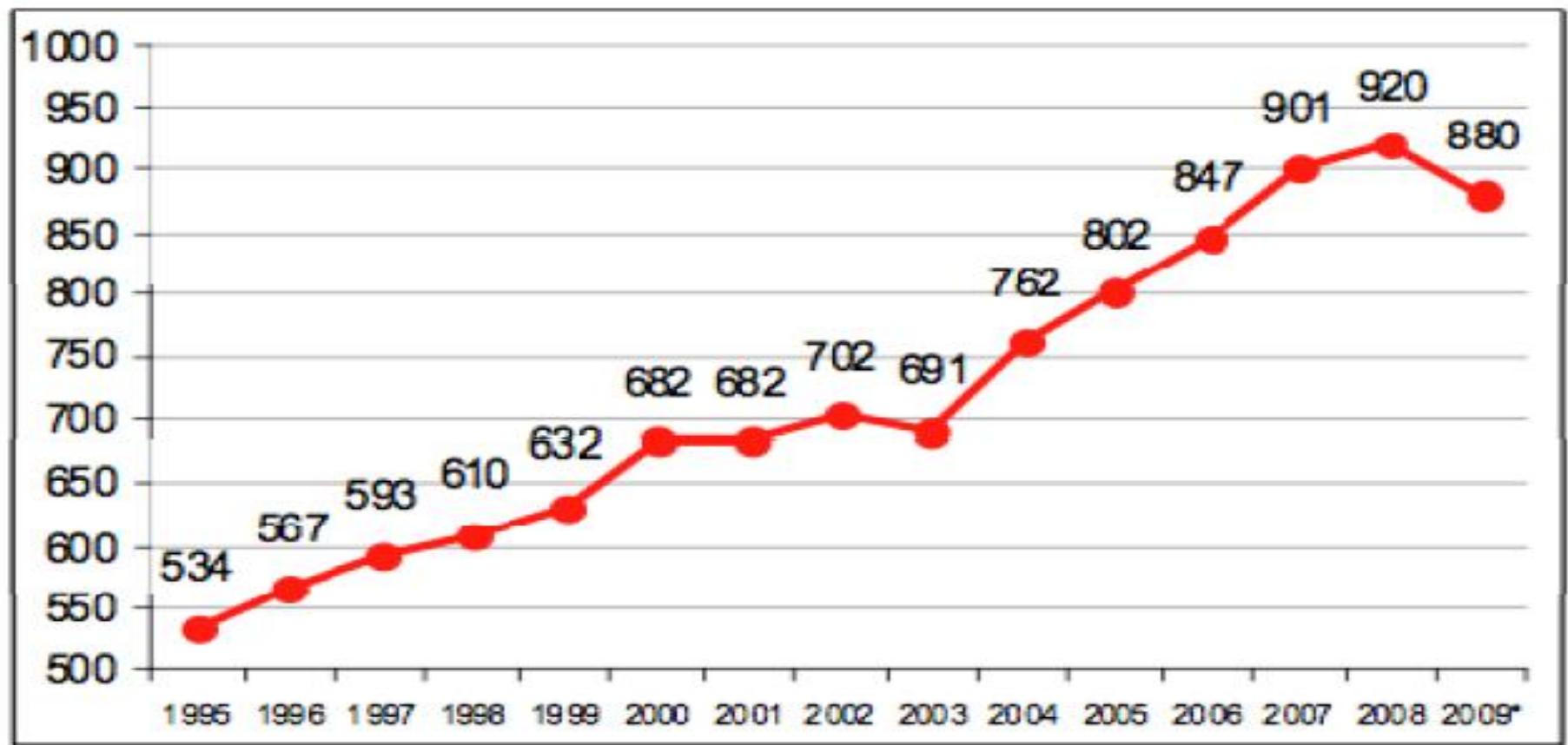


World-wide situation

World: Inbound Tourism

International Tourist Arrivals

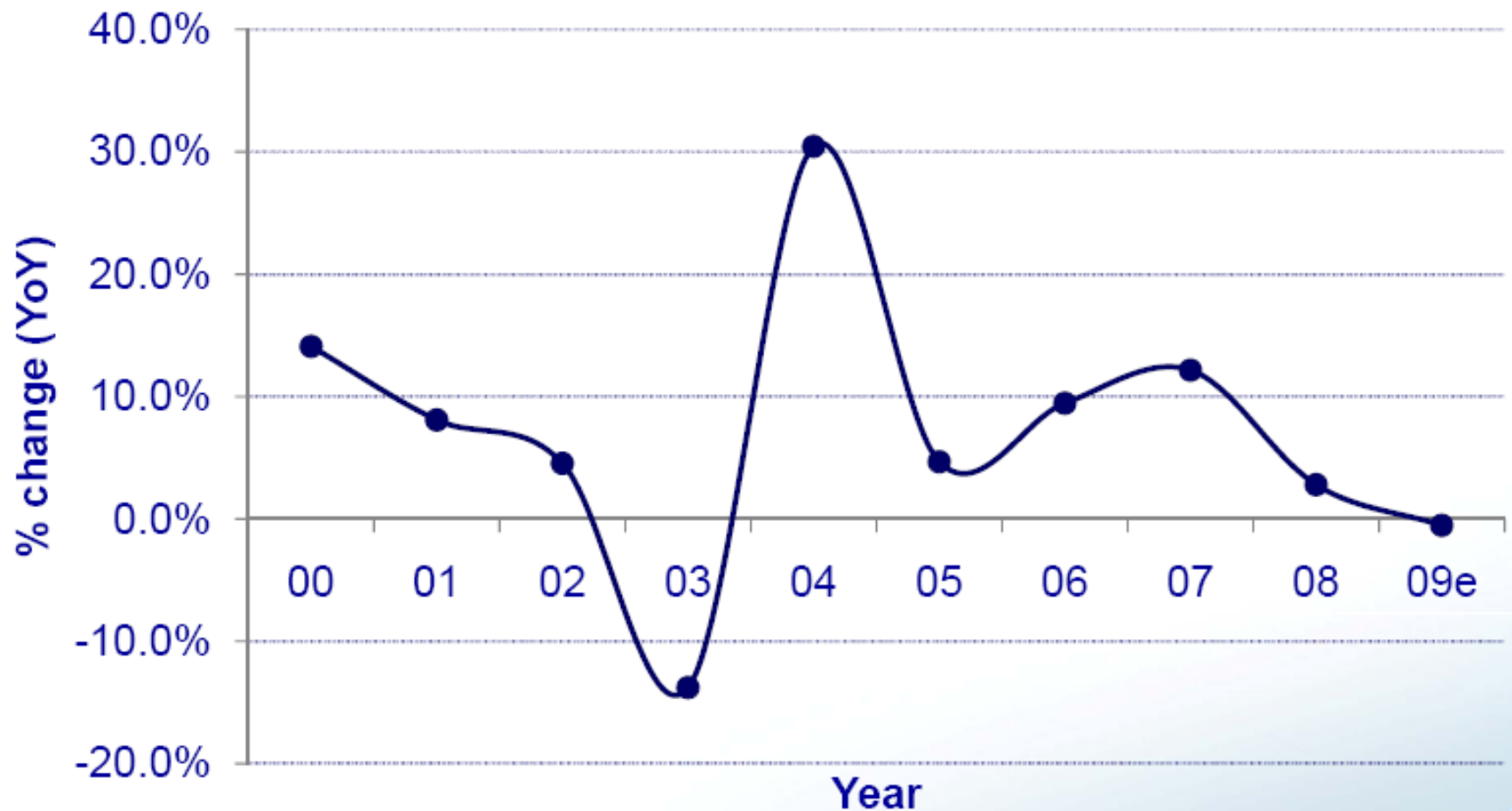
(million)



Source: World Tourism Organization (UNWTO) ©

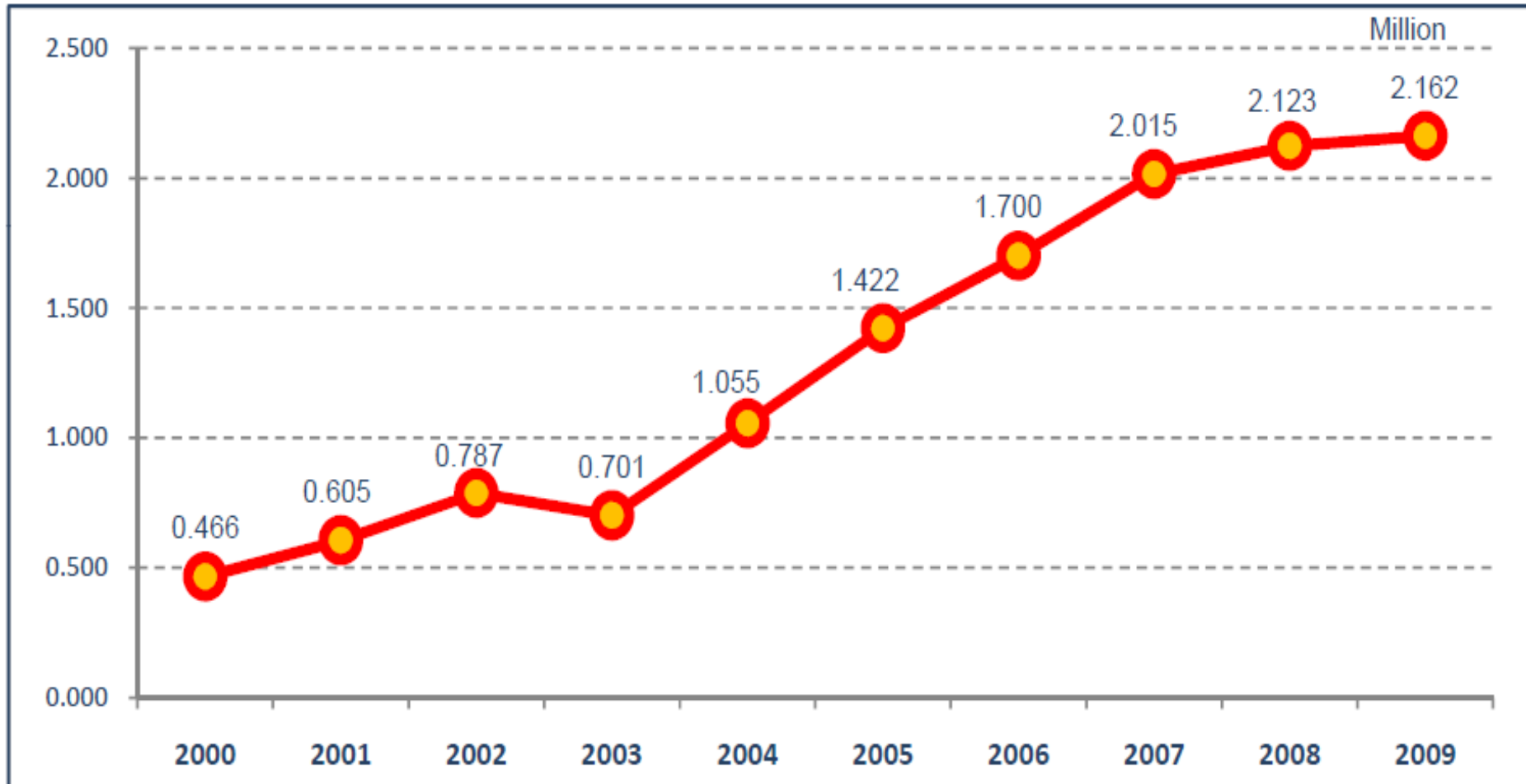
% Change in Arrivals to ASEAN

YoY, source: relevant NTOs/NSAs, compiled by PATA

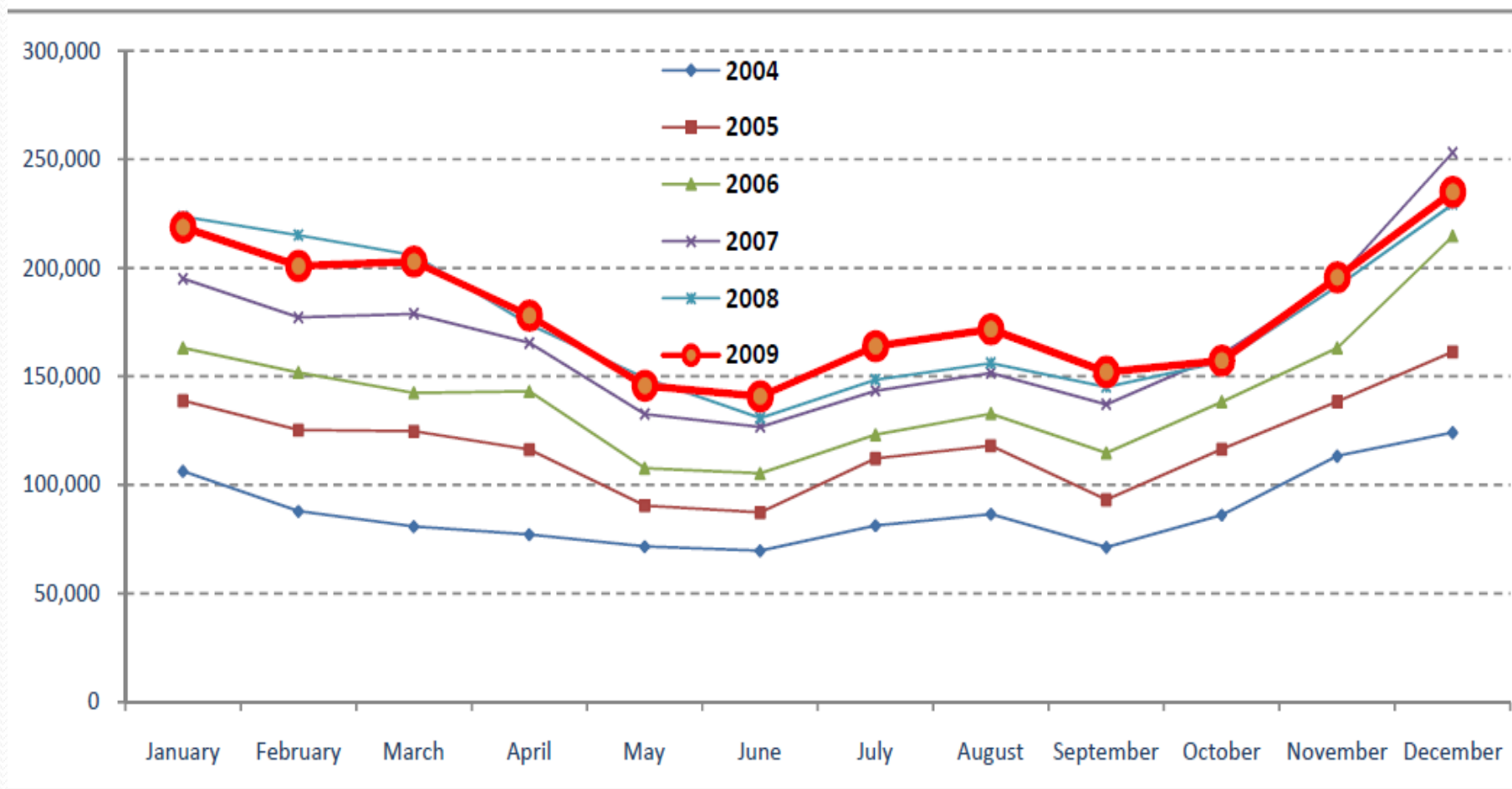


Cambodia: Inbound Tourism 2009

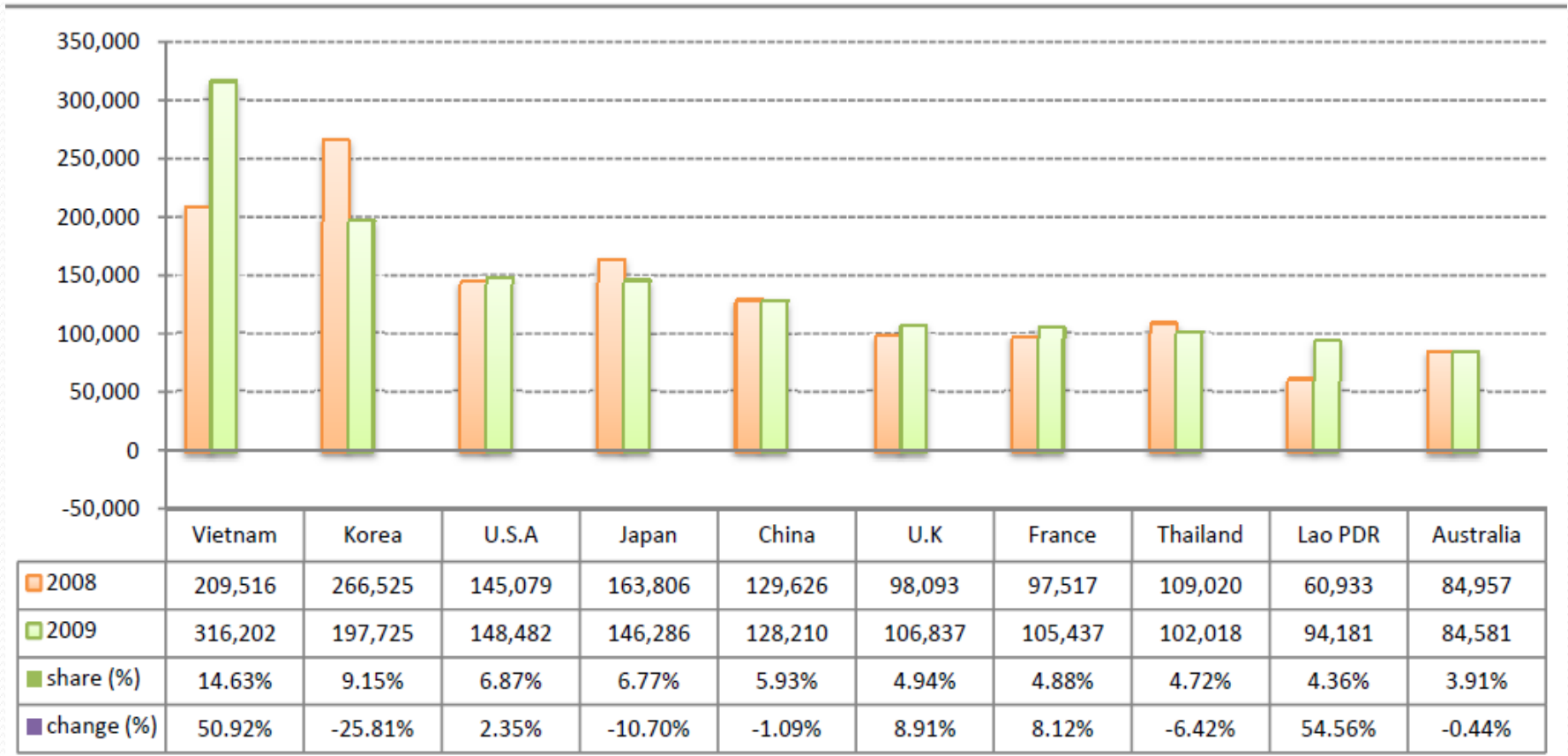
Cambodia: Inbound Tourism
International Visitor Arrivals



Cambodia: Inbound Tourism 2009 by Months



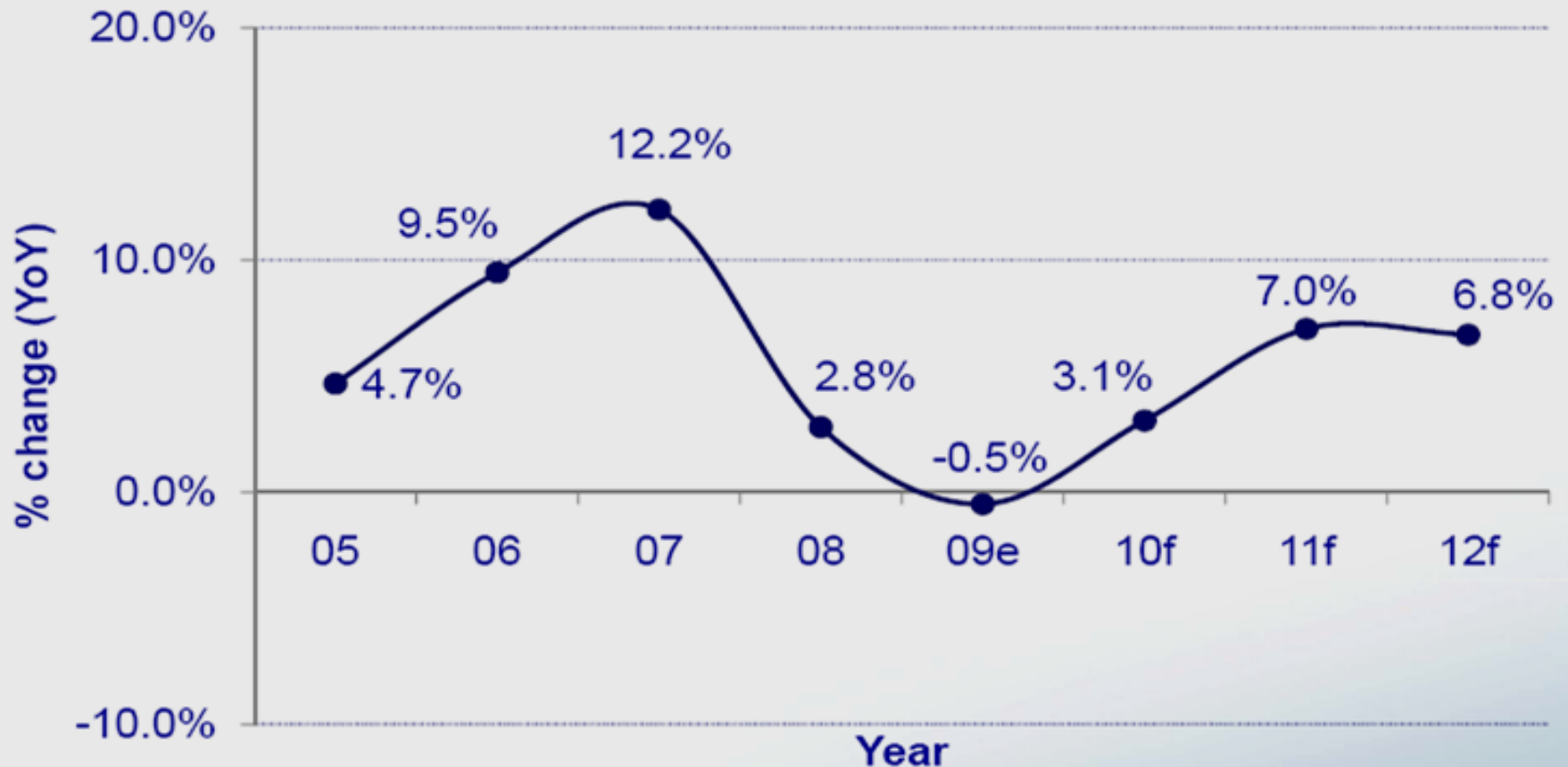
Top Ten Arrivals to Cambodia in 2009



% Change in Arrivals to ASEAN

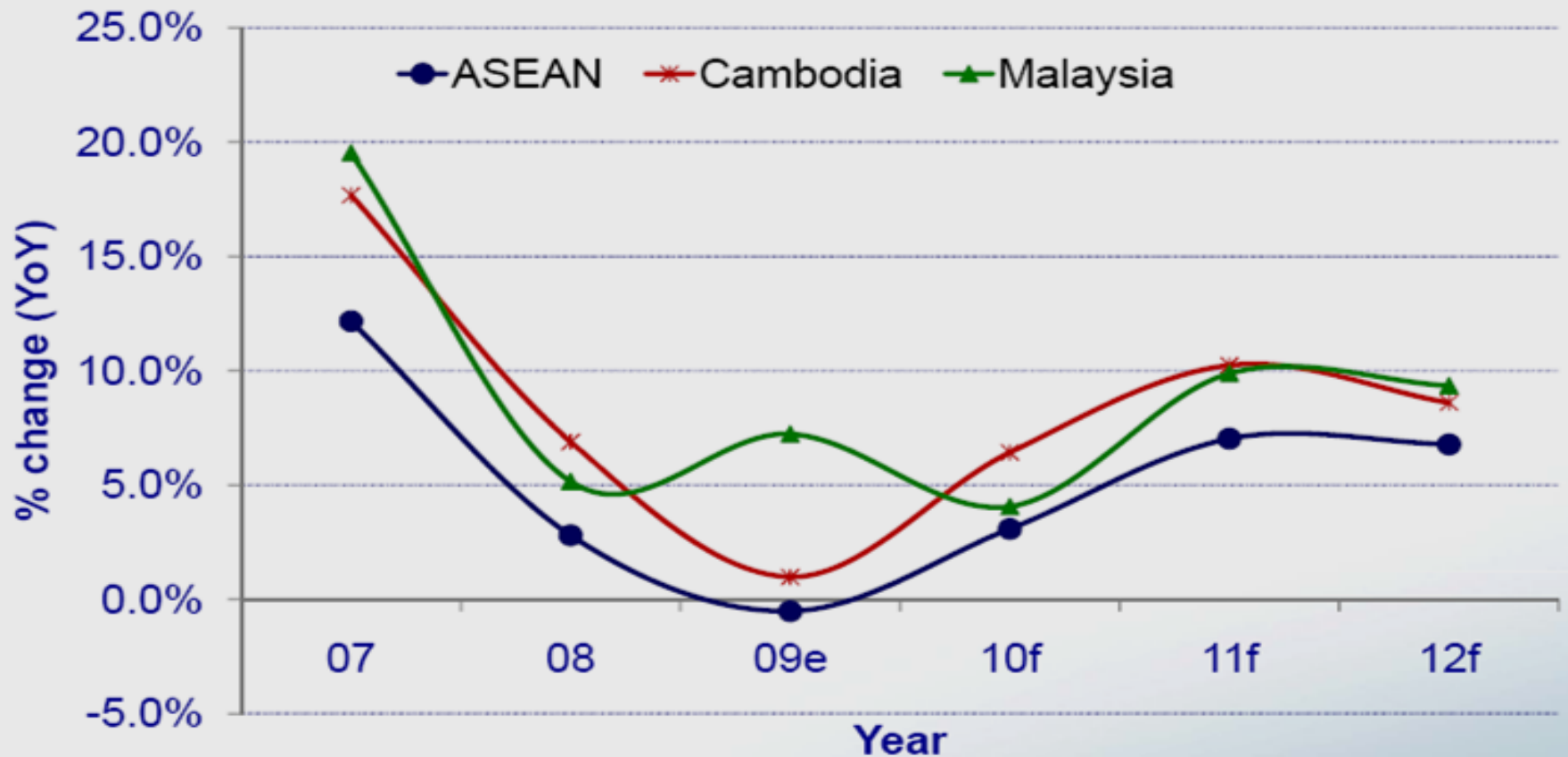
YoY, Actual and Forecast, source: relevant NTOs/NTAs, compiled by PATA

CAGR (2012/09) = 5.6%



% Growth > ASEAN average

Source: PATA 'Asia Pacific Tourism Forecasts 2010-12' Turner & Witt (2010)



Cambodia Map



- 1) Aranyaprathet/Poipet
- 2) Hat Lek/Koh Kong a.k.a. Cham Yeam,
- 3) Chong Jom (Surin province)/O'Smach
- 4) Chong Sa-ngam (Si Saket province)/Anlong Veng,
- 5) Ban Pakard (Chantaburi province)/Phsa Prom Pailin
- 6) Ban Laem/Daun Lem Border (Kamreang district of Battambang province)

Phnom Penh

Cambodia's capital sits at the confluence of the Mekong, Basac and Tonle Sap rivers. Considered the loveliest of the French-built cities of Indochina, it was founded as a small monastery in 1372 by a rich Khmer woman called Yeay Penh, after she found four Buddha statues in a tree trunk on the banks of the Mekong. Distinguished French colonial homes, tree-lined boulevards and charming cafes dot the waterfront.



Siem Reap

The land of Angkor Wat, the world heritage. The temple of Angkor Wat is only one of numerous temples within this area. Angkor literally means 'City' or 'capital' and 'wat' means 'temple'. Founded in 802 AD it was allegedly residence for more than a million people in the heyday of the Khmer Empire in the 12th and 13th centuries. It is estimated that the temples took 30 years to construct using 17,000 to 20,000 workers. The temple was first dedicated to Vishnu and after a long period of abandonment from 1432 it was later dedicated to Buddhism during the reign of King Ang Chan in the 15th century. Its beauty and state of preservation are unrivalled and its artistic distinctiveness is as fine as the Taj Mahal in India



South Gate Angkor Thom



Ta Promh Temple



Angkor Wat Temple

Sihanouk Ville

Located on the Gulf of Thailand, 245 km southwest of Phnom Penh, Kompong Som, also known as Sihanoukville, is Cambodia's most popular seaside resort and the major coastal Cambodian port. The sandy beaches, laid-back atmosphere, range of recreational activities, and excellent seafood are all major tourist draws. In addition, it is a good base for visiting Ream National Park, encompassing 21,000 hectares of coastal area, including sandy beaches, mangrove forests, the Prek Tek Sap estuary, offshore coral reefs and two islands.



Possible Overland Routes

- **1. Laos – Cambodia**
- **2. Thailand – Cambodia (via Koh Kong)**
- **3. Thailand – Cambodia (via Poi Pet)**
- **4. Vietnam – Cambodia (via Ba Vet)**
- **5. Vietnam – Cambodia (via Chao Duc)**

Overland Trip Map

Travel Routing Map



Possible Overland Routes

- 1. Laos – Cambodia via Dom Kalor border in Stung Treng province-PNH: **465km:8hrs**
- 2. Thailand – Cambodia (via Koh Kong-PNH or SHV: **245km:4hrs**)
- 3. Thailand – Cambodia (via Poi Pet-REP:**160km:3hrs**)
- 4. Thailand – Cambodia (Chong Sagnam border-Siem Reap: **130km:2hrs:30mn**)
- 5. Vietnam – Cambodia (via Ba Vet-PNH:**140km:3hrs**)
- 6. Vietnam – Cambodia (via Chao Duc-PNH: **4hrs by boat only**)

1. Laos - Cambodia

- There is one popular route for overland trip from Laos to Cambodia Pakse–Phnom Penh
- Provinces: Steung Treng, Katie, Kampong Cham
- Distance: 531Km
- Duration: 10 Hours
- Road Condition: Good



Phnom Penh to Bavet border is 140km:2hrs
Phnom Penh to Chao Doc border by boat :3h30mn
Phnom Penh to Domgalor border is 470km:8hrs

1. Laos - Cambodia (Cont)

- **There are plenty of places to visit along the route**
- **Stung Treng Province:** Mekong River Dolphins, Preah Ko Temple, Koh Ksach Resort
- **Kratie Province:** Dolphin Habitat, Phnom Preah, Phnom Som Bok Resort
- **Kampong Cham Province:** Norko Bacheay Temple, Phnom Pros Phnom Srey (Mounts of Men and Women)
- **Accommodation:** The accommodation is tourist basic. Guest House and 2 Star Hotels could be provided to the tourists.

2. Thailand - Cambodia (via Koh Kong)

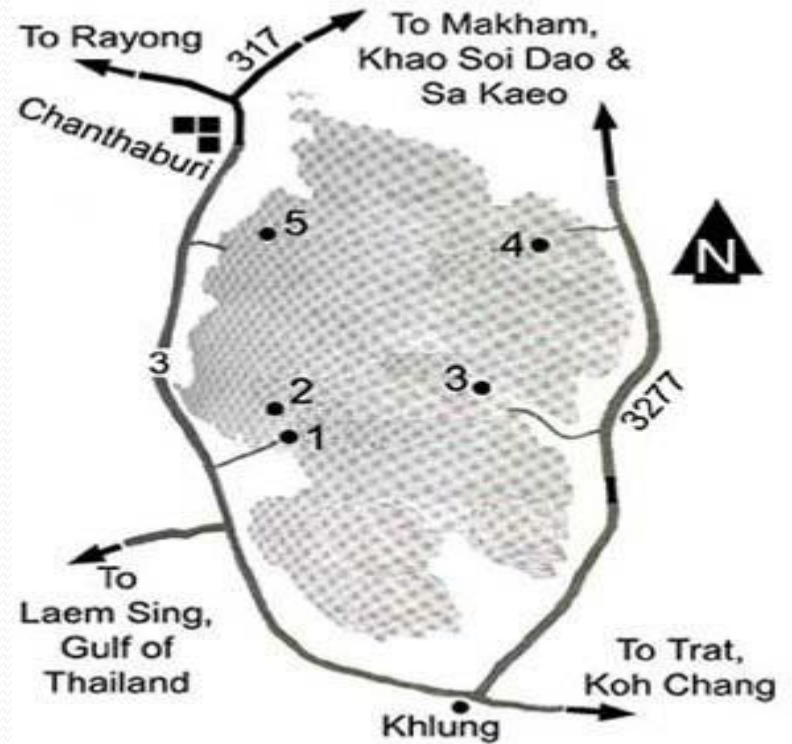
- This is very interesting coastal route from Thailand through Koh Chhang to Cambodia
- Provinces: Koh Kong, Sihanoukville
- Distance: 453Km
- Duration: 6 Hours
- Road Condition: Good
- Koh Kong to Phnom Penh is: 240km:4hrs



2. Thailand - Cambodia (via Koh Kong)



Nam Tok Pliew



2. Thailand - Cambodia (Cont)

- **There are a lot of attractions on the way which related to Coastal activities and Eco Tourism.**
- **Koh Kong Province:** Mangrove Forest, Water Fall, Chi Phat CBET, Trapeng Rong CBET, and Ecologies.
- **Sihanouk Province:** Beautiful Beaches, Kbal Chhay Water Fall, and untouched islands.
- **Accommodation:** For the accommodation, we can provide variety of hotels ranging from 5 star hotels to the basic serviced bungalows.

3. Thailand - Cambodia (via Poi Pet:410km:4hrs)

- This is very amazing cultural and agricultural routes for the tourists.
- Provinces: Banteay Mean Chey, Siem Reap , K. Thom, K. Cham
- Distance: 410Km
- Duration: 4 Hours
- Road Condition: Good
- Poipet-REP: 165km:3hrs
- Poipet-PNH: 390km:6hrs



3. Thailand - Cambodia (via Poipet)



Poipet Border



3. Thailand - Cambodia (Cont)

- **It used to be the Angkorian High Way in the ancient Time.**
- **Banteay Mean Cheay:** Banteay Chmar Temple, Banteay Top Temples, and airticraft villages.
- **Siem Reap:** hundreds of temples available to visits: Angkor Wat as well as Tonle Sap Lake.
- **Kampong Thom:** Sombo Prey Kok Temples, Phnom Santuk, Silk farm, and local markets
- **Accommodation:** For the accommodation, we can provide variety of hotels ranging from 5 star hotels to the basic serviced guesthouses.

4. Vietnam - Cambodia (Cont)

- **At the border, there are biggest Casinos. The route will give you the scenery of agricultural land of Cambodia and old style Cambodian houses.**
- **Svay Reang Province:** Via Ko River, Bordering Casinos
- **Accommodation:** For the accommodation, we can provide variety of hotels ranging from 5 star hotel casino to the basic serviced guesthouses.

3. Thailand – Cambodia (Cont)

- **It used to be the Angkorian High Way in the ancient Time.**
- **Banteay Mean Cheay:** Banteay Chmar Temple, Banteay Top Temples, and airticraft villages.
- **Siem Reap:** hundreds of temples available to visits: Angkor Wat as well as Tonle Sap Lake.
- **Kompong Thom:** Sombo Prey Kok Temples, Phnom Santuk, Silk farm, and local markets
- **Accommodation:** For the accommodation, we can provide variety of hotels ranging from 5 star hotels to the basic serviced guesthouses.

4. Vietnam – Cambodia (via Bavet and Chao Duc)

- It is amazing to travel along this National Route #1 as it shows you a variety of lifestyles of Cambodia people. And the other option is to travel by Boat from Chao Duc to Phnom Penh
- Provinces: Sray Reang Provinces
- Distance: 150 Km (Overland)
- Distance: 79 Km (River)
- Duration: 4 Hours
- Road Condition: Good

Border crossing



Phnom Penh to Bavet border is 140km:2hrs
Phnom Penh to Chao Doc border by boat :3h30mn
Phnom Penh to Domgalor border is 470km:8hrs

4. Vietnam – Cambodia

- **At the border is the biggest Casino in Cambodia. The route will give you the scenery of agricultural land of Cambodia and old style Cambodian houses.**
- **Svay Reang Province:** Via Ko River, Bordering Casinos
- **Accommodation:** For the accommodation, we can provide variety of hotels ranging from 5 star hotel casino to the basic serviced guesthouses.



Thanks for Your Attentions